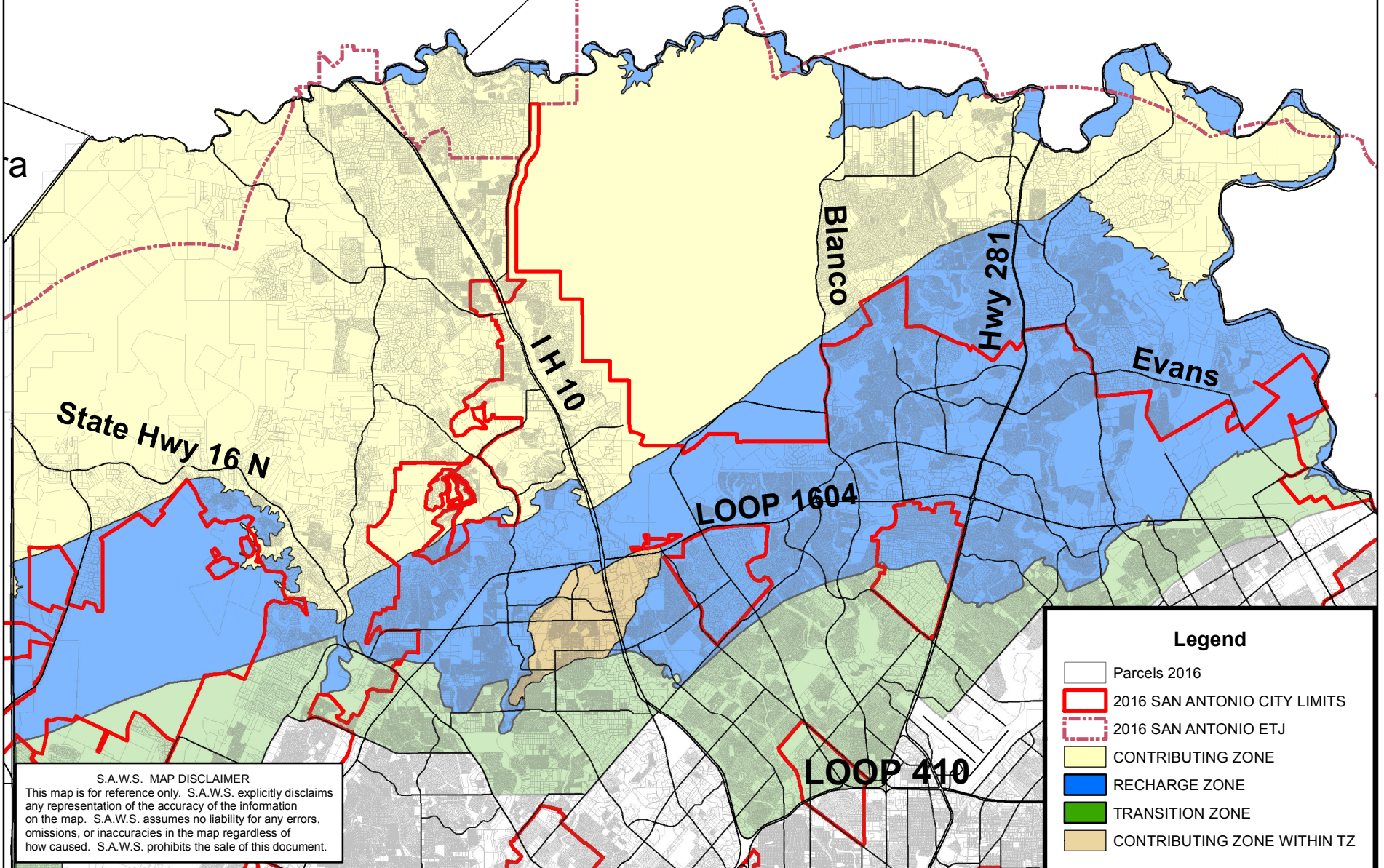


EDWARDS AQUIFER RECHARGE ZONE BEXAR COUNTY

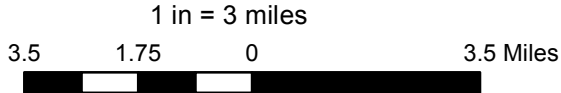
Kendall



S.A.W.S. MAP DISCLAIMER
 This map is for reference only. S.A.W.S. explicitly disclaims any representation of the accuracy of the information on the map. S.A.W.S. assumes no liability for any errors, omissions, or inaccuracies in the map regardless of how caused. S.A.W.S. prohibits the sale of this document.

Legend

- Parcels 2016
- 2016 SAN ANTONIO CITY LIMITS
- 2016 SAN ANTONIO ETJ
- CONTRIBUTING ZONE
- RECHARGE ZONE
- TRANSITION ZONE
- CONTRIBUTING ZONE WITHIN TZ



NOTE: Texas Commission on Environmental Quality (TCEQ) is the official authority for the Edwards Aquifer Recharge Zone Boundary

Resource Protection & Compliance Dept.
 July, 2016
 KES